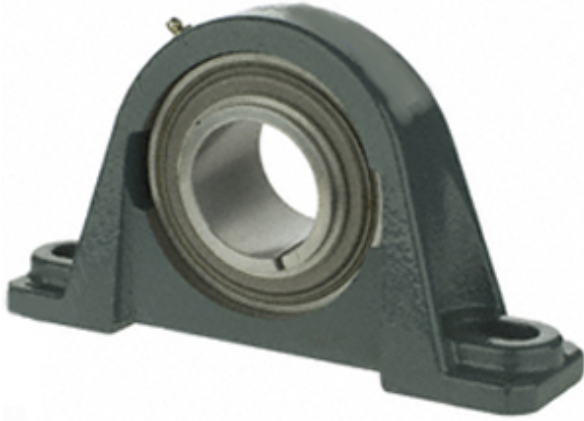




NTN BEARING MFG.CORP

1.772 Inch | 45 Millimeter x 1.858 Inch | 47.2 Millimeter x 2.252 Inch | 57.2 Millimeter Dodge P2B-GTMAH-45M Pillow Block Ball Bearing Units



P2B-GTMAH-45M Bearing 2D drawings and 3D CAD models

Bearing No. P2B-GTMAH-45M

Category	Pillow Block Bearings
Inventory	0.0
Manufacturer Name	ABB MOTORS AND MECHANICAL INC
Minimum Buy Quantity	N/A
Weight	2.948
EAN	0782476307905
Product Group	M06110
Number of Mounting Holes	2
Mounting Method	Tapered Adapter Sleeve
Housing Style	2 Bolt Pillow Block
Rolling Element	Ball Bearing
Housing Material	Cast Iron
Expansion / Non-expansion	Non-expansion
Mounting Bolts	16 Millimeter
Relubricatable	Yes
Insert Part Number	INS-GTM-45M
Seals	Single Lip Contact
Housing Configuration	1 Piece Solid
Inch - Metric	Metric
Other Features	Single Row Medium Duty Air Handling Wide Inner Race Thin Wall
Long Description	2 Bolt Pillow Block; 45MM Bore; 57.2MM Base to



NTN BEARING MFG.CORP

	Center Height; Tapered Adapter Sleeve Mount; Ball Bearing; 152.4MM Minimum Bolt Spacing; 169.9MM Bolt Spacing Maximum; Relubricatable; Cast Iron; Single
Category	Pillow Block
UNSPSC	31171511
Harmonized Tariff Code	8483.20.40.40
Noun	Bearing
Keyword String	Pillow Block
Manufacturer URL	http://www.dodge-pt.com
Manufacturer Item Number	P2B-GTMAH-45M
Weight / LBS	8.598
Bolt Spacing Minimum	6 Inch 152.4Millimeter
Actual Bolt Center to Center	0 Inch 0Millimeter
d	1.772 Inch 45 Millimeter
D	1.858 Inch 47.2 Millimeter
B	2.252 Inch 57.2 Millimeter
Nominal Bolt Center to Center	6.3 Inch 160 Millimeter
Bolt Spacing Maximum	6.689 Inch 169.9Millimeter